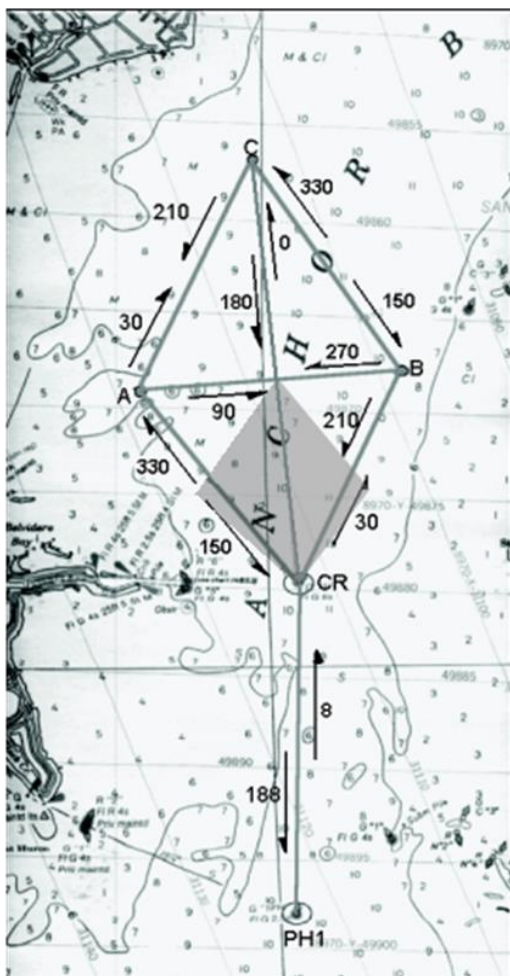


ANCHOR BAY GENERAL COURSE DIAGRAM

Not For Navigation

Course Headings are Magnetic



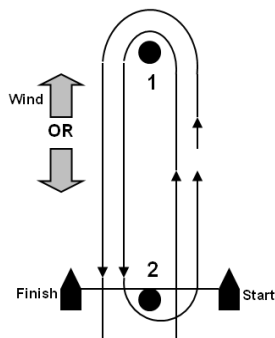
Approximate Mark Positions

CR	42° 35.57'	82° 44.51'
A	42° 37.01'	82° 46.19'
B	42° 37.27'	82° 43.84'
C	42° 38.64'	82° 45.31'
1PH	42° 32.79'	82° 44.78'

COURSE DIAGRAM – COURSE W

The starting area for **weeknight** series course W is indicated by the shaded area shown on the diagram at left.

The starting area for **invitational** and **club** course W will be within the area bounded by marks CR, A, C, and B.



Course W Shapes and Options



Windward/leeward or leeward/windward from start to mark indicated by shape. Two laps (Start–1–2–1–Finish)



Windward/leeward or leeward/windward from start to ABYRA mark C. One lap (Start–1–Finish) for weeknights; two laps (Start–1–2–1–Finish) for invitational and club races



Windward/leeward or leeward/windward from start to inflatable mark. Two laps (Start–1–2–1–Finish)